

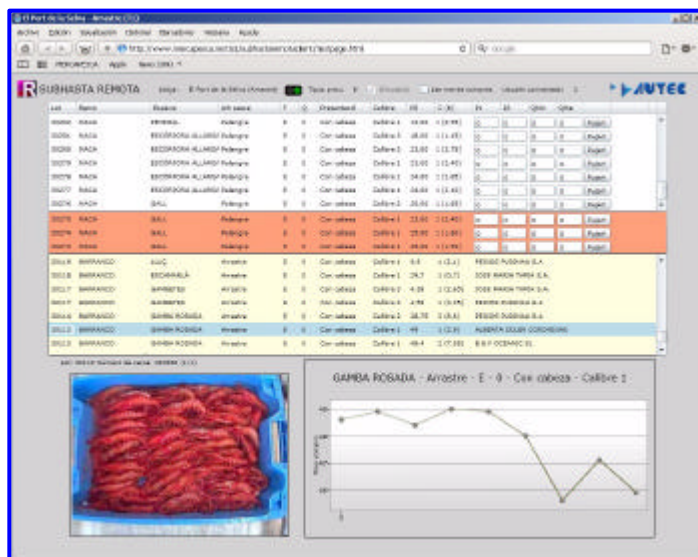
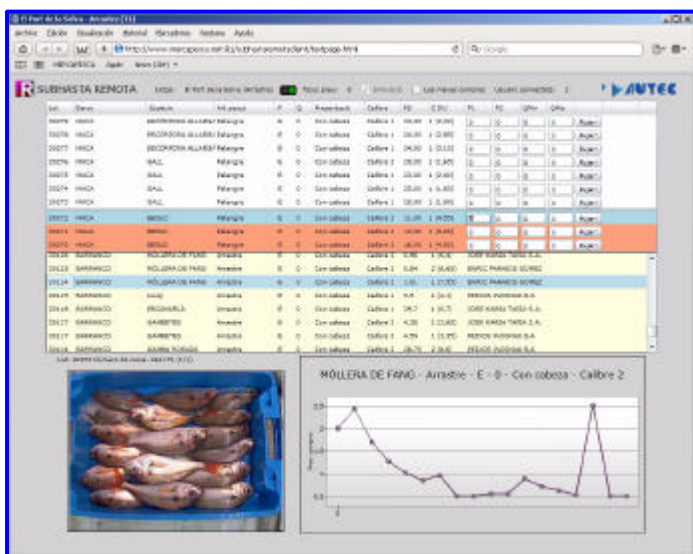
## AUTEC HAS SET UP THE REMOTE ACCESS TO AUCTIONS OF WHOLESALE FISH MARKETS

The authorized buyers can buy directly from their office or anywhere through their laptop, and participate actively to the auction and in real time with the present buyers.

With the remote access, it exists 2 modalities: remote participation and/or planned purchase.

The remote participation consists for buyers to access directly to the auction, in competition with the physically present buyers in the auction. All this process is done through the website [www.mercapesca.net](http://www.mercapesca.net)

The planned purchase consists in sending a "closed envelope" purchase offer for an identified product before the beginning of the auction. The offer may be extended to a determined time period.



View of the software screens for buyers with the Remote Participation modality

Validación	Éxito	Periodo	Horario	Subasta	Comprador	Barco	Espécie	Calibre	Present.	Frescura	Calidad	Arte de pesca	P. Min	P. Máx.	Unidad compra	Entidad mín.	Entidad máx.	Cajas compradas	Kilos comprados	Nueva copiando datos
✓	🕒	24/07/2009	13:00:00 - 21:00:00	M-POISSON BLEU	MB MAREE	Cualquier	Barbue			A	2		2,2	2,5	K	20	100	0	0	📄
✓	🕒	24/07/2009	08:00:00 - 21:00:00	M-POISSON BLEU	MB MAREE	Cualquier	Aiguillat commun						4,8	4,92	K	10	500	10	20,00	📄
✓	🕒	24/07/2009	08:00:00 - 12:00:00	M-POISSON BLEU	POSTE ACHAT CRIEUR	Cualquier	Aiguillat commun	Taille 20		E			4,2	4,6	K	20	200	0	0	📄
✓	🕒	24/07/2009	08:00:00 - 12:30:00	M-POISSON BLEU	POSTE ACHAT CRIEUR	Cualquier	Aiguillat commun	Taille 20, Taille 30		E	Indéterminé		4,6	4,65	K	20	200	0	0	📄
✓	🕒	24/07/2009	08:00:00 - 12:00:00	M-POISSON BLEU	POISSONNERIE NICOLAS	Cualquier	Aiguille		Frais Vidé				3,1	3,5	K	10	150	0	0	📄
✓	🕒	24/07/2009	08:00:00 - 21:00:00	M-POISSON BLEU	POISSONNERIE NICOLAS	Cualquier	Aiguillat commun						4,8	4,9	K	10	500	20	40,00	📄

View of the software screen for buyers with the Planned Purchase Modality

## ALIMENTARIA 2010

In the frame of its projects to promote its products, the wholesale fish market of Barcelona presents the Autec remote sale system in the fair Alimentaria 2010.



A group of wholesale fish markets is pioneer in the settlement of the remote sale system of Autec.

Concretely, the wholesale fish markets of Port de la Selva, Santa Pola, L'Ametlla de Mar, Vilanova i la Geltrú and Barcelona are currently equipped in tryout period.



Pictures the buyer can see in his PC during the auction

### ASK FOR INFORMATION WITHOUT ANY COMMITMENT

If you wish, you may make a test of the program functioning. We propose you, from your PC, to follow up a real auction of one of the pioneer wholesale fish markets that possess this system.

To get information about how to do it, please contact us at [comercial@autec.es](mailto:comercial@autec.es) or +34 972 238 861