



Wholesale auction



Weighing lines, Static weighing  
and outlets



Photography and data of the sale



Video Wall Screen



Point of  
static  
weighing

## SETTING-UP OF LA NUEVA RULA DE AVILÉS (Astúrias)

Autec has set up the electronic sale and weighing system of la Nueva Rula de Avilés, one of the most important fish market in Spain and Europe.

It is possessed of the most modern technology and security equipment.

The systems Autec has set up are formed of :

- 3 Lines of weighing: Weighing, labelling and grading .
- 7 points of static weighing
- 1 point of mobile weighing
- 4 outlets near the boxes, in the warehouse.
- 1 auction room for 144 buyers, with motorised belts and infrared wireless remote controls.

CANCHA		pág. 1/2	pág. 1/2	04/02/2010	CAJAS
BARCO		HORAVENTA	ESPECIE		
ANGEL PILAR	10:00	ABRIL	20		
ANGEL R. PEREZ	10:00	ABRIL POREX	25		
BENTOR	10:00	ACEDIA	30		
CARLOS NICOLAS	10:00	ALFONSIÑOS	40		
DIVINA DEL MAR	10:00	ALIGOTE	10		
PILAR TERESA	10:00	ALMEJA	40		
SILVADOR JURADO	10:00	ALPABARDA	20		
ARTURO MADERA CINADEVILL	17:00	ANDARICA	40		
BIRISAS DEL CAUTABRICO	17:00	ANDARICA	45		
BUSTILLO DOMOSTI	17:00	ATUN	45		
BUREAUKARTASUNA	17:00	BACALAO	40		
LUANCO PESQUERIAS SL	17:00	HUEVAS	40		
		LENGUADO	331		

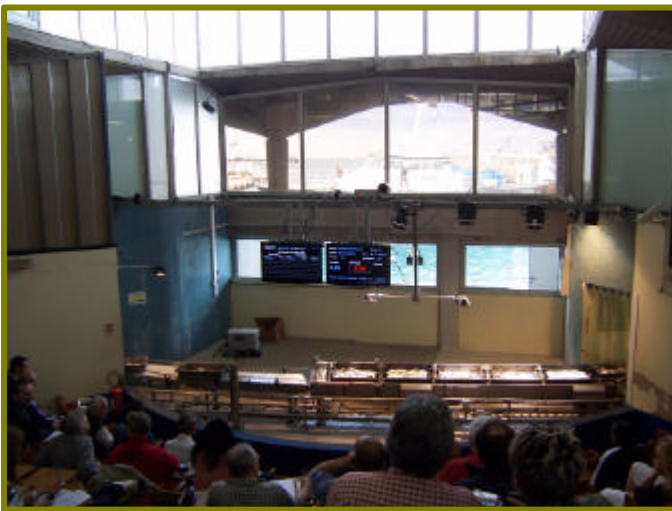
Video Wall Screen, in the wholesale auction fish market  
Display of the sales catalogue

Moreover, the sale system offers the following functionalities:

- Computer system of security with double server and superfluous components.
- Edition and publication of the sales catalogue.
- Assignment system of turn of sale.
- Information screens for ship owners and buyers.
- Video Wall screens in the auction fish market, to follow-up movements of the ships and the catalogue of products
- Terminals to edit consultations.

## SETTING-UP OF THE WHOLESALE AUCTION FISH MARKET OF STE (France)

The port of Ste, in Languedoc-Roussillon, is the second most important French commercial port in the Mediterranean coast and one of the main fishing ports in Mediterranean. After the Grau d'Agde, Ste is the 2d port that Autec has set up in France.



Trawling fish auction

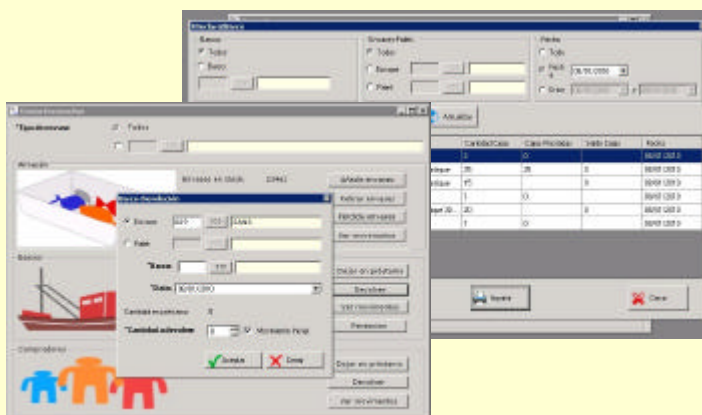


Purse seine fish auction

Among the new equipment of the wholesale auction fish market, the control of boxes system allows to control at any moment the buyers' stock, the ships' stock, and even the auction fish market's one.

The auction fish market charges a daily amount to use boxes, and has the possibility to configure some days of lack.

The now current system can receive orders in "closed envelopes": planned purchase. For the Blue Fish sale, these planned purchases enter in the wholesale auction fish market to compete directly with the buyers.



### NEW VERSION TO CONTROL BOXES

Follow-up of the returnable boxes movements. Ship's stock, buyer's stock, auction warehouse's stock. Control of the boxes renting payment and of boxes loss.